

Additional Circuits
521: Spotting Light
531: Projector Shutter

Notes

All heights are measured from the show deck immediately below. Where no boom arm is shown on a boom, the height annotated is from the floor to lantern's clamp. If a boom arm is shown, the height annotated is the distance from the floor to the boom arm. FOH Bars are not shown in their true position. See Section drawing for clarification.

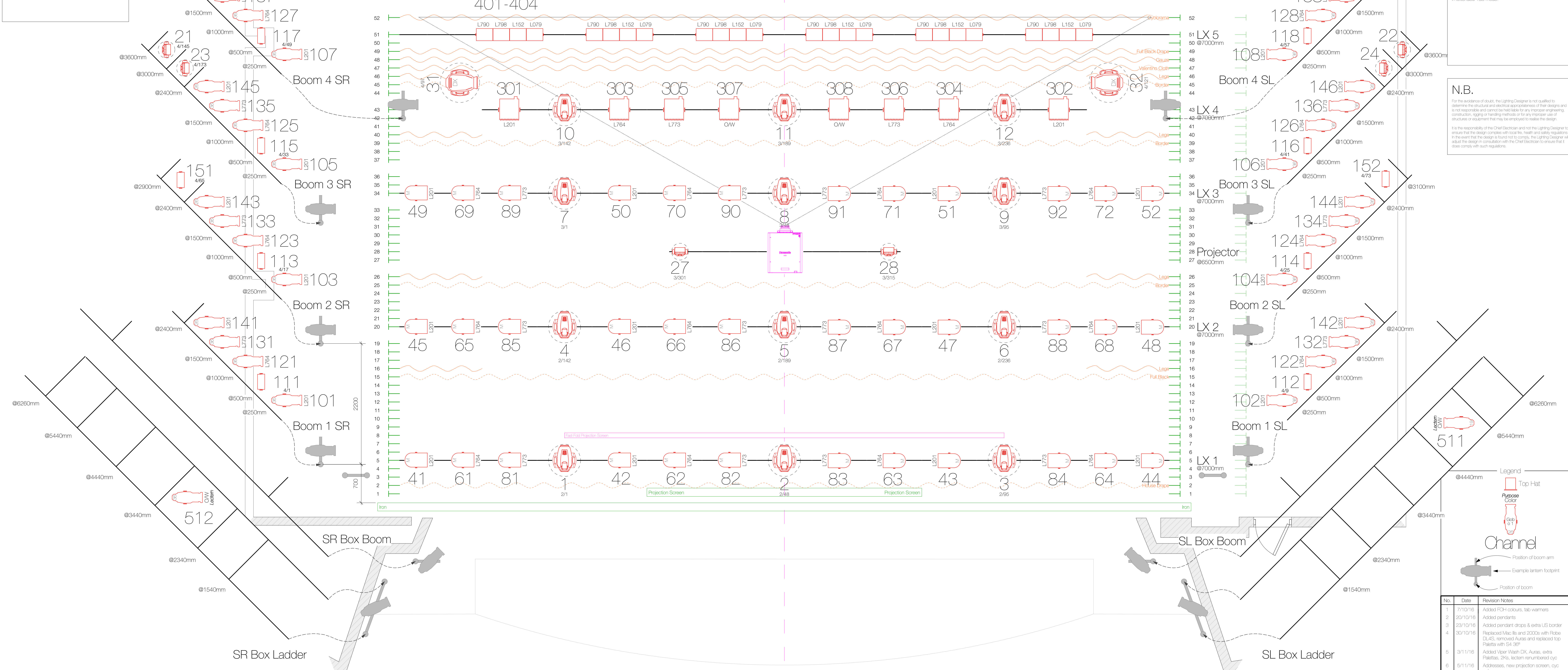
Fresnels on LX 4 should not have barn doors fitted to clear the pendants and cliffs.

Mac Auras in Standard Mode with CC off. Viper Wash DX in Extended 168 mode.

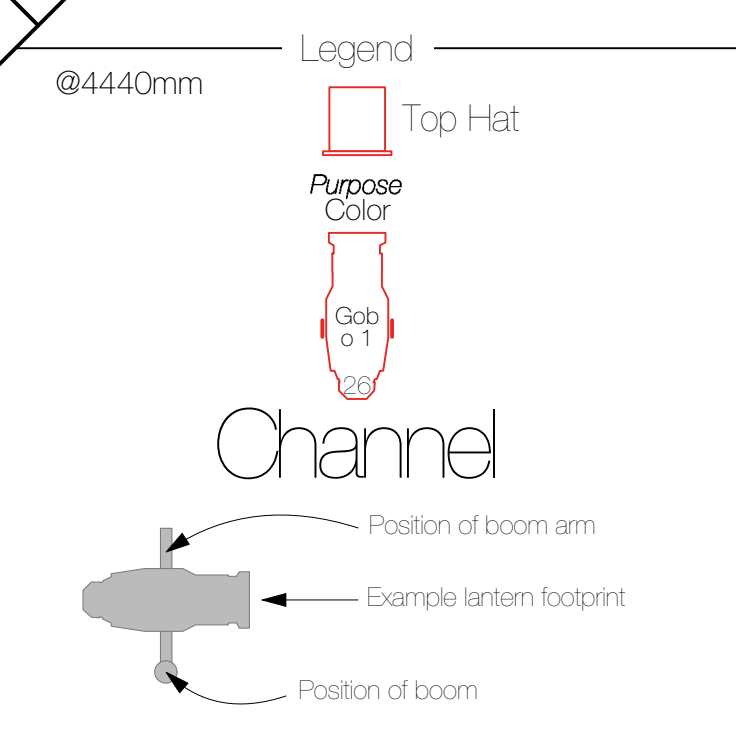
N.B.

For the avoidance of doubt, the Lighting Designer is not qualified to determine the structural and electrical appropriateness of their design and is not responsible and cannot be held liable for any improper engineering, construction, rigging or handling methods or for any improper use of structures or equipment that may be employed to realize the design.

It is the responsibility of the Chief Electrician and not the Lighting Designer to ensure that the design complies with local fire, health and safety regulations. In the event that the design is found not to comply, the Lighting Designer will adjust the design in consultation with the Chief Electrician to ensure that it does comply with such regulations.



Lantern Key		
	ETC Source 4 19°	1
	ETC Source 4 26°	26
	ETC Source 4 36°	25
	ETC Paletta 11	12
	Selecon Rama High Performance Fresnel	2
	2.5K Fresnel	8
	PAR 64 MFL	36
	Mac Aura	6
	Robe Robin DL4S	12
	Mac Viper Wash DX	2
	Horus 4 cell	6



No.	Date	Revision Notes
1	7/10/16	Added FOH colours, tab versions
2	20/10/16	Added pendants
3	23/10/16	Added pendant drops & extra US border
4	30/10/16	Replaced Mac file and 2000s with Robe DL4S, removed Auras and replaced top Palettas with Set 3P
5	3/11/16	Added Viper Wash DX, Auras, extra Palettas, 2Ks, lectern renumbered cyc
6	5/11/16	Addresses, new projection screen, cyc gels
7	18/11/16	As on opening night, with extra Auras

Project Title

Quintessential
Five New Ballets

Venue

Peacock Theatre
Portugal Street
Covent Garden
London WC2A 2HT

Company

New English Ballet Theatre

Event Title

Lighting Plot

Director	Karen Pilkington-Miksa	Lighting Designer	Andrew Ellis
Set Designer	Louise Whitmore	Designer	Alex Forey ALD #2583
Sound Designer		Steel Fix	

Scale	1:25 @ A0	Sht-1	of
Date	5/11/2016		3

Additional Circuits

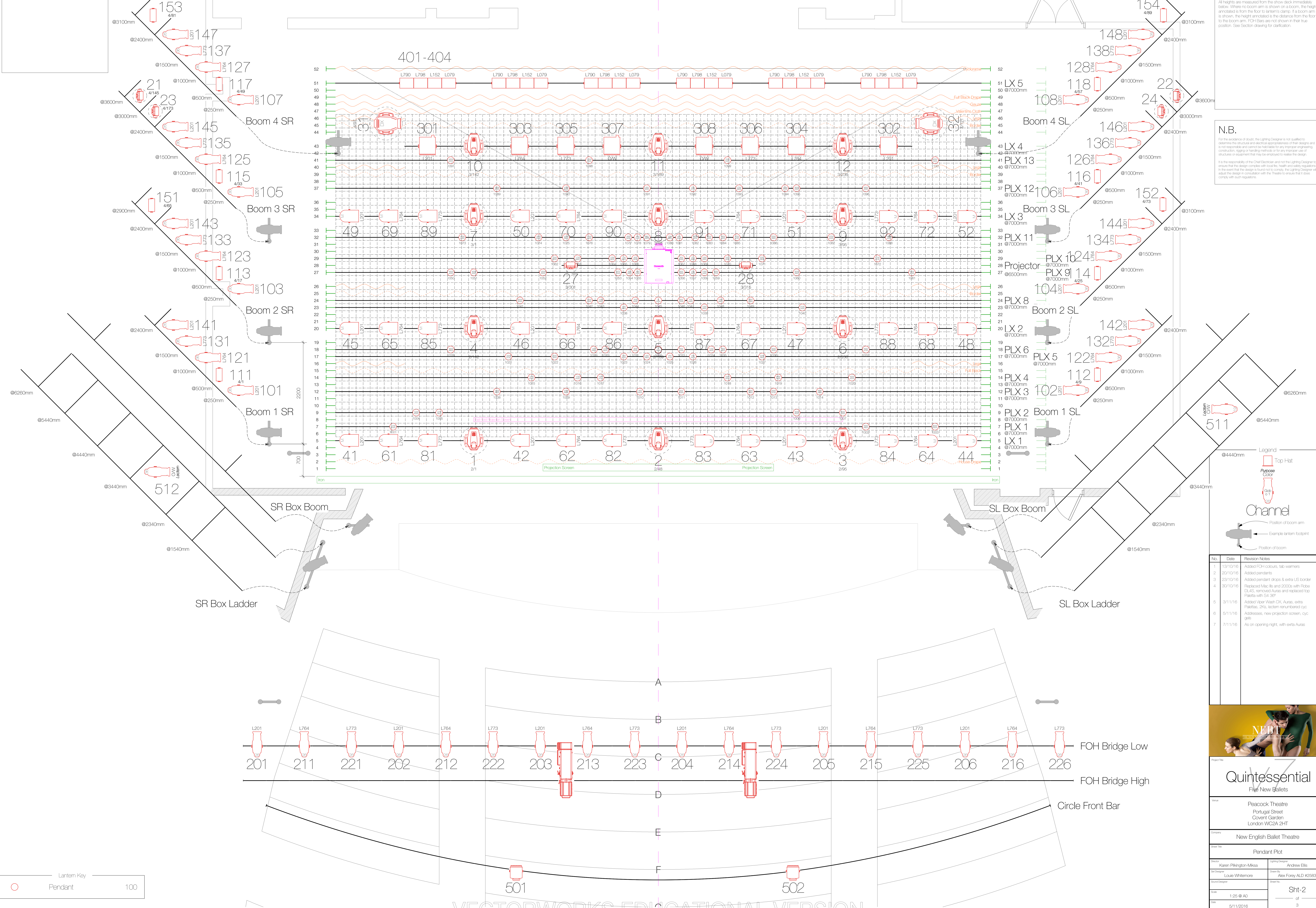
Notes

All heights are measured from the show deck immediately below. Where no boom arm is shown on a boom, the height annotated is from the floor to lantern's clamp. If a boom arm is shown, the height annotated is the distance from the floor to the boom arm. FOH Bars are not shown in their true position. See Section drawing for clarification.

N.B.

For the avoidance of doubt, the Lighting Designer is not qualified to determine the structural and electrical appropriateness of their design and is not responsible and cannot be held liable for any improper engineering, construction, rigging or handling methods or for any improper use of structures or equipment that may be employed to realise the design.

It is the responsibility of the Client/Production and not the Lighting Designer to ensure that the design complies with local fire, health and safety regulations. In the event that the design is found not to comply, the Lighting Designer will adjust the design in consultation with the Theatre to ensure that it does comply with such regulations.



The highest and lowest pendent on each bar is shown on this plot.

For the avoidance of doubt, the Lighting Designer is not qualified to determine the structural and electrical appropriateness of their designs and is not responsible and cannot be held liable for any improper engineering, construction, rigging or handling methods or for any improper use of structures or equipment that may be employed to realise the design.

It is the responsibility of the Chief Electrician and not the Lighting Designer to ensure that the design complies with local fire, health and safety regulations. In the event that the design is found not to comply, the Lighting Designer will adjust the design in consultation with the Theatre to ensure that it does comply with such regulations.

No.	Date	Revision Notes
		
Project Title		
<h1>Quintessential</h1> <p>Fires New Ballets</p>		
Venue		
<p>Peacock Theatre Portugal Street Covent Garden London WC2A 2HT</p>		
Company		
<p>New English Ballet Theatre</p>		
Creative Title		
Section Plot		
Director	Karen Pilkington-Missa	Lighting Designer
Set Designer	Louis Whitmore	Andrew Ellis
Sound Designer		Choreography
		Alex Forey ALD #12583
Stage		Choreo No.
Scale		Sht-3
Date	5/11/2016	of
		3