



Additional Channels	
...	...
Houselights	901-907
Working Lights	911-915
X4 Bar (21) Pixels	2001-2010
X4 Bar (22) Pixels	2011-2020
X4 Bar (23) Pixels	2021-2030
X4 Bar (24) Pixels	2031-2040
X4 Bar (25) Pixels	2041-2050
X4 Bar (26) Pixels	2051-2060

Colour Key		
Color	Size	Count
+F	159mm	5
+F	185mm	3
G365	165mm	4
L162+F	159mm	1
L283	150mm	4
L283	165mm	4
L283+F	185mm	4
L728	256mm	4
R316	185mm	4
R318+f	185mm	4
R3220	185mm	4
R3220+F	185mm	1
R371	185mm	4
R371+F	185mm	12
R371+F	159mm	3
R372+f	185mm	4
R77+f	185mm	4

Lantern Key		
	ETC ColorSource Spot 26° c/w homogeniser	4
	ETC Source 4 Lustr+ 36° c/w homogeniser	1
	ETC Source 4 36° c/w 750w HPL Tungsten Lamp	3
	ETC Source 4 50° c/w 750w HPL Tungsten Lamp	1
	ETC Source 4 70° c/w 750w HPL Tungsten Lamp	1
	ETC Source 4 25-50° c/w 750w HPL Tungsten Lamp	18
	ETC Source 4 15-30° c/w 750w HPL Tungsten Lamp	4
	Strand Cantata 26-44° c/w 1200W T29 lamp	8
	ETC Source 4 Par MFL c/w 575W HPL lamp and R-row lens	12
	Strand Quartet Fresnel c/w barn doors	4
	Strand Patt 123 c/w barn doors	8
	1K Fresnel c/w barn doors	6
	Selecon Arena Fresnel c/w barn doors	1
	PAR 64 MFL c/w CP62 lamp	4
	Chroma-Q Colour One 100X c/w barn doors	8
	Martin Atomic 3000 c/w MAX-15 lamp and trigger clamp	1
	GLP Impression X4 Bar 10 c/w no diffusion and slimline rail couplers	6
	Beyond M28A c/w trigger clamps	2
	ETC Source 4 Revolution c/w 750w 77v CXL lamp, shutter module, iris module, and R119 in the internal media tips	1

Atmospherics Key		
	Fan	1
	Unique 2.1 Hazer c/w water-based Unique fluid	2

SPS 19 Scroll																		
1	2	3	4	5	6	7	8	9	10	11	12	13	14	15	16	17	18	19
L106	L128	L777	L147	L204	L205	L702	L103	L763	R00	L202	L201	L711	L200	L197	L195	L071	L124	L245

Revolution Standard Scroll											
1	2	3	4	5	6	7	8	9	10	11	12
R00	R33	R13	R57	R348	R343	R23	R371	R361	R83	R26	R89

1 Lighting Plot Scale: 1:25

**Notes**

All annotated heights are measured from the boom arm/clamp to the show deck immediately below. Lanterns are on 500mm centres unless otherwise noted.

Please have on hand out of R119 & R132 (denoted on the plot by +F and +f respectively), and stock of Blackwrap & Blacksock during house.

All trussels and PCs will be used with barn doors, even if not drawn, unless otherwise noted.

Exact placement of booms, constructed rigging positions, and practices to be confirmed on site. Please discuss scenic and set-mounted practices with the me.

**N.B.**

This drawing represents artistic concepts and construction suggestions only.

For the avoidance of doubt, the lighting designer is not qualified to determine the structural and electrical appropriateness of their design and is not responsible and cannot be held liable for any improper engineering, construction, rigging or handling methods or for any improper use of structures or equipment that may be employed to realize the design.

It is the responsibility of the Production Electrical and Production Manager, not the Lighting Designer, to ensure that the design, including any atmospheric effects, complies with local fire, health and safety regulations. In the event that the design is found not to comply with such regulations, the Lighting Designer will adjust the design in consultation with them to ensure that it does.

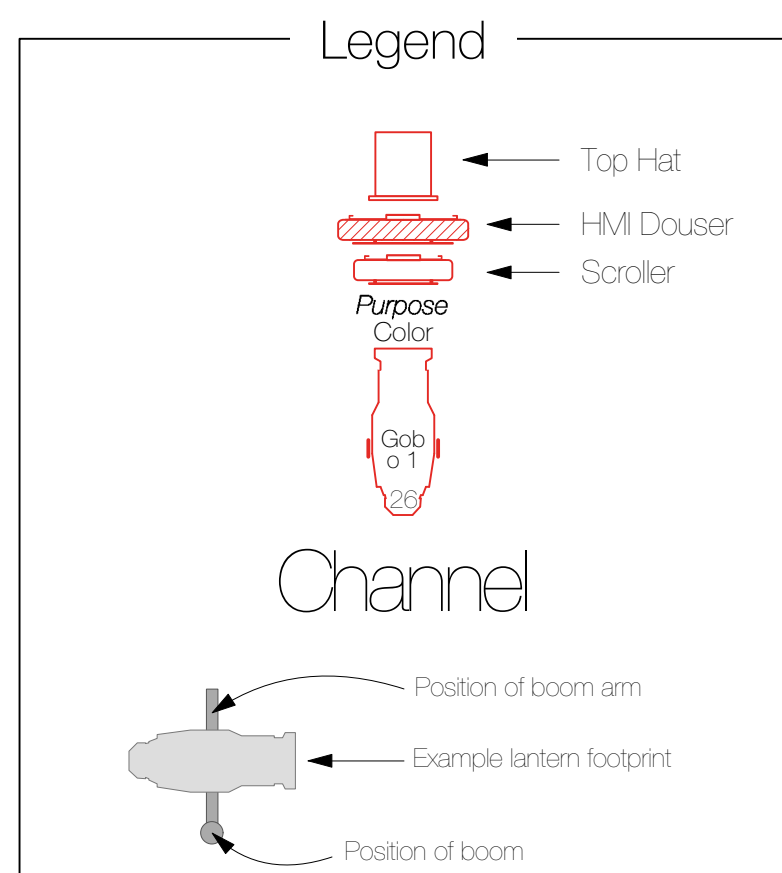
This drawing, any symbols it contains, and the lighting design it represents, are copyrighted by Alex Forey.

© Alex Forey 2017.

**Contact**

Please contact me with any queries and before making any substitutions.

Alex Forey  
me@alexfory.com  
+44 (0)77 5707 4510



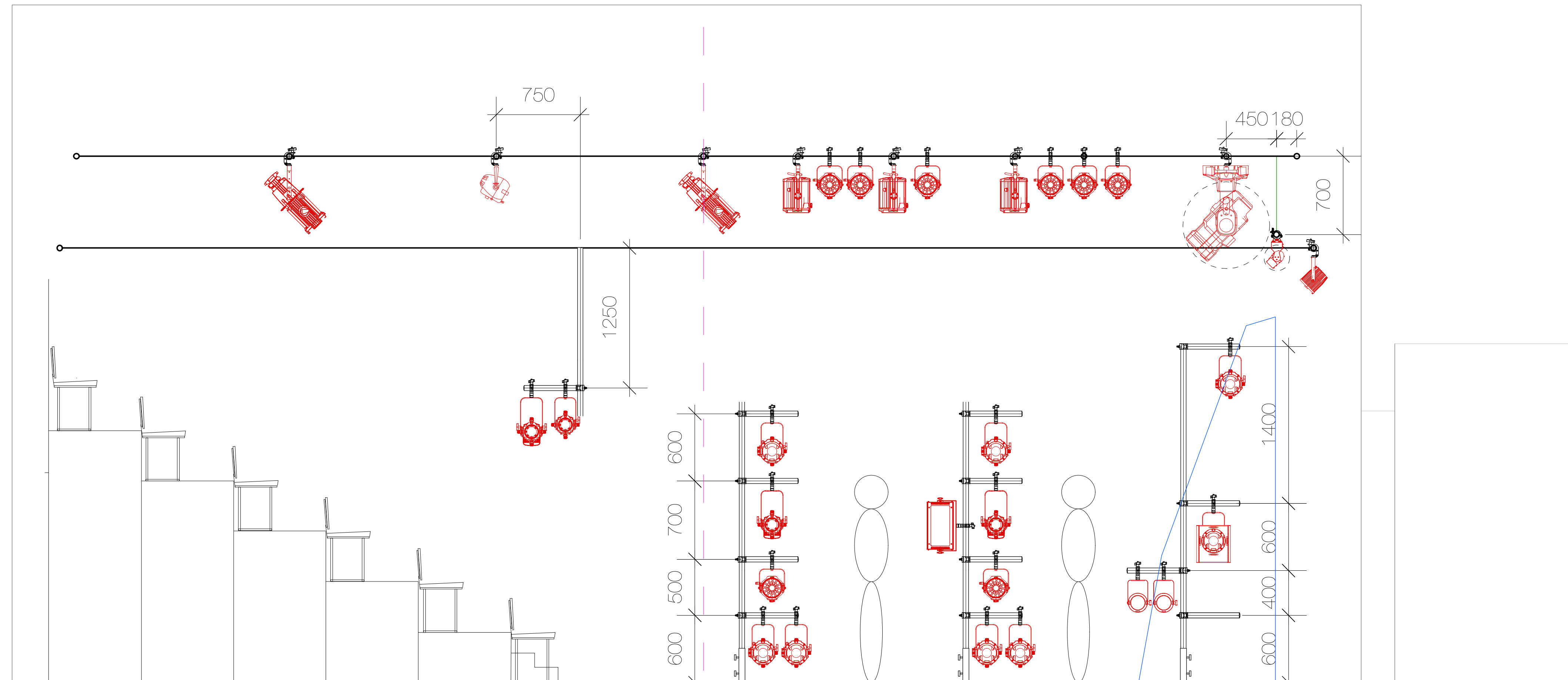
No.	Date	Revision Notes
1	24/5/17	Initial version
2	13/6/17	Lustr+ -> CS Spot 1, atmospherics, added side Atmos
3	19/6/17	X4 BARS fw, adjusted "OLC" bar length
4	25/6/17	White Light gear finished, 2K + Revo to replace V-100S, replacing 4 of use of house 16
5	15/7/17	Extra X4 Bar (thanks WJL), swapped lens tubes

BABEL	
Project Title	
Babel	
Venue	
Lyric Studio Lyric Square, King Street, Hammersmith London W6 0QL	
Company	
SPS Drama	
Event Title	
Lighting Plot	
Client	Edward Williams
Lighting Designer	Alex Forey
Set Designer	Dan Stanforth
Sound Designer	David Jey
Scale	1:25 @ AO
Date	23/06/2017
Sht-1	
1	





VECTORWORKS EDUCATIONAL VERSION



## Notes

All annotated heights are measured from the boom arm/clamp to the show deck immediately below. Lanterns are on 500mm centres unless otherwise noted.

Exact placement of booms, constructed rigging positions, and practicals to be confirmed on site. Please discuss sonic and set-mounted practicals with the me.

N.B.

This drawing represents artistic concepts and construction suggestions only.

For the avoidance of doubt, the lighting designer is not qualified to determine the structural and electrical appropriateness of their designs and is not responsible and cannot be held liable for any improper engineering, construction, rigging or handling methods or for any improper use of structures or equipment that may be employed to realize the design.

It is the responsibility of the Production Electrician and Production Manager, not the Lighting Designer, to ensure that the design, including any atmospheric effects, complies with local fire, health and safety regulations. In the event that the design is found not to comply with such regulations, the Lighting Designer will adjust the design in consultation with them to ensure that it does.

© Alex Forey 2017.

## Contact

Please contact me with any queries and before making any substitutions:

Alex Forey  
me@alexforey.com  
+44 (0)77 8707 4510

No.	Date	Revision Notes
		
Project Title		
		
Author	Lyric Studio Lyric Square, King Street, Hammersmith London W6 0QL	
Contents	SPS Drama	
Chapter Title		
Section Plot		
Director	Edward Williams	Lighting Designer Alex Forty
Set Designer	Dan Stanforth	Soundby (me)
Sound Designer	David Jay	Chapter No.
Scene	1.25 @ A0	Sht-2
Date	29/06/2017	_____ of _____
		1