

**Notes**

All fresnels to be fitted with barn doors

1K Fresnels to be mounted using truss clamps forwards at 90° to bar away from horizontal centre line to provide more height clearance

Dimmers 13-17 do not exist

Channels 8A, 8B, 8C share dimmer 20, but will be switched during the performance using a hard patch in the booth

Source 4 Lustr 2s to have homogenisers installed, and to be set to H3C+Str. Channels 3 & 4 Incandescent dimmer curve, Channel 5 to Standard dimmer curve.

Martin Atomic to be set to 4-channel mode, Beyond M28As to basic mode. Scrollers speed auto, fan speed to DMX (see additional channels)

Lanterns in the 200 range are houselights

F=R119, f=R132, D=ETC Soft Diffusion

**Additional Channels**

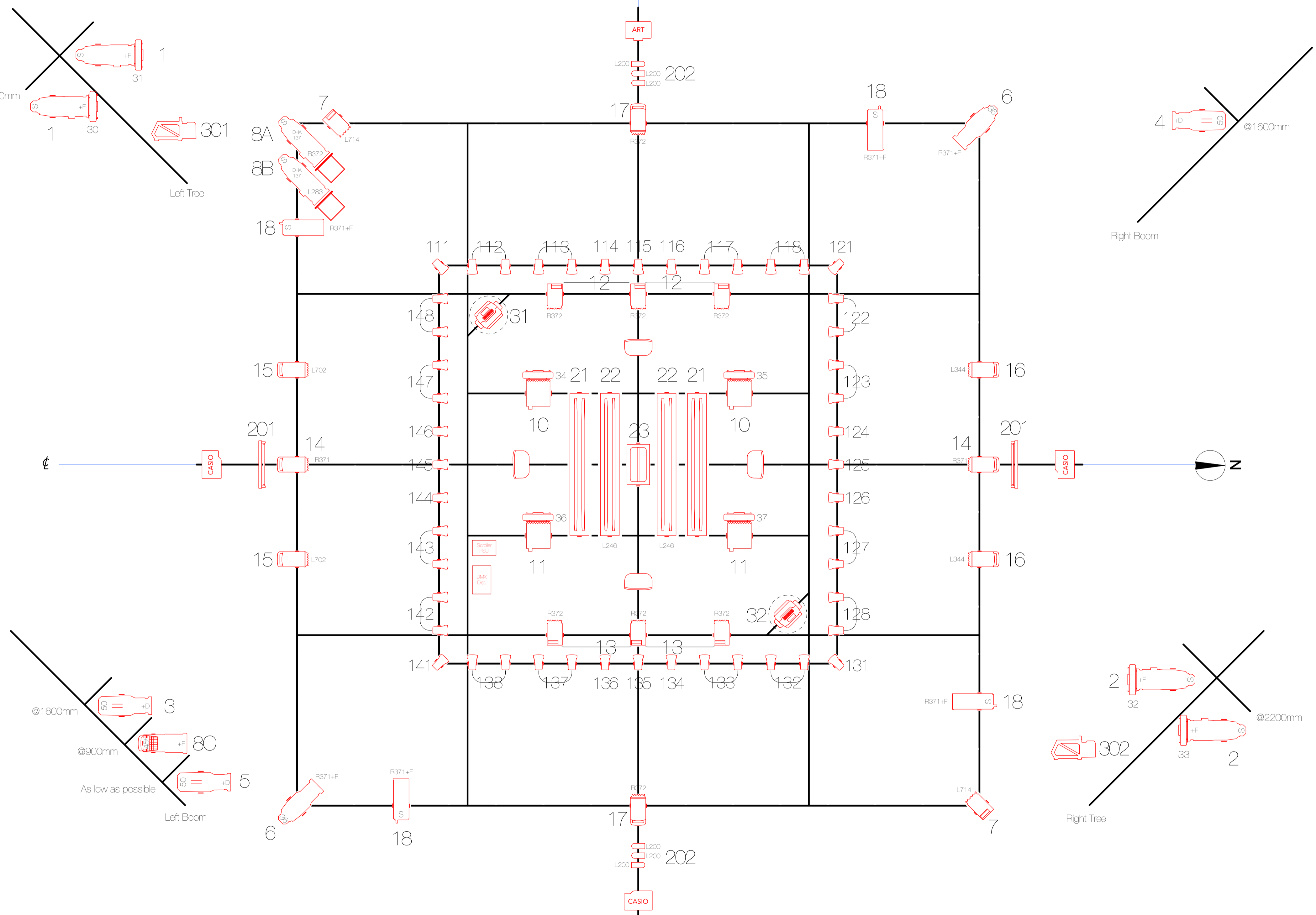
301: Hazer 1 Pump  
 302: Hazer 1 Fan  
 303: Hazer 2 Pump  
 304: Hazer 2 Fan  
 401: Tree Scroller Fans (Addr 38)  
 402: Grid Scroller Fans (Addr 39)

**Colour List**

Color	Size	Count
+D	159mm	3
+F	185mm	5
L200		6
L246	214x240mm	2
L283	185mm	1
L344	125mm	2
L702	125mm	2
L714	150mm	2
R371	125mm	2
R371+F	159mm	2
R371+F	150mm	4
R372	125mm	2
R372	150mm	6
R372	185mm	1

**Lantern Key**

	ETC Source 4 Lustr Series 2 50°	3
	ETC Source 4 36°	2
	ETC Source 4 25-50°	6
	Selecon Pacific 45-75°	1
	Strand Prelude 28-40°	4
	1K Fresnel	4
	Selecon Acclaim Fresnel	8
	Strand Quartet Fresnel	8
	PAR 36 Pinpoint	48
	PAR 16	6
	Martin Atomic 3000	1
	Rainbow Pro 8°	8
	Beyond M28A	2



**Typical Lantern**

Color  
 Chnl  
 19

No.	Date	Appr	Revision Notes
1	9/1/16		Added most things
2	19/1/16		Changed post posts to trees, moved movers, renumbering, more fresnels
3	21/1/16		Changed a couple Acclams to Quartets and moved fresnels a bit
4	29/1/16		Changed some houselights to birds, added Pacific
5	31/1/16		Got reworking, channel 8, and hazers
6	18/2/16		Renumbered pinspots, moved 5, LED bars, notes
7	23/2/16		Clarified notes, removed extra LEDs, changed boom heights (again)

**Grey Matter**

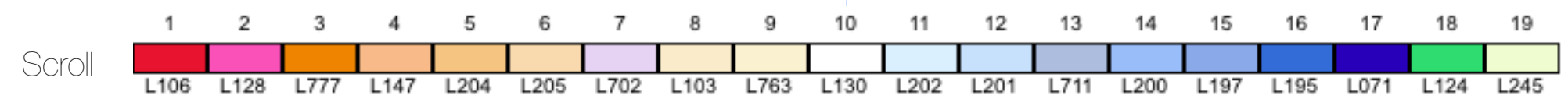
St Paul's School  
 80 Lonsdale Road  
 Baines, London  
 SW13 9UT

Milton Studio

Lighting Plot

Project Manager: Andrew Broughton  
 Designer: Alex Forsy  
 Sound Designer: Amos Jackson  
 Date: 23/2/16

Sheet 1 of 1



	Fluorescent Tube	4
	Small Fluorescent Tube	2